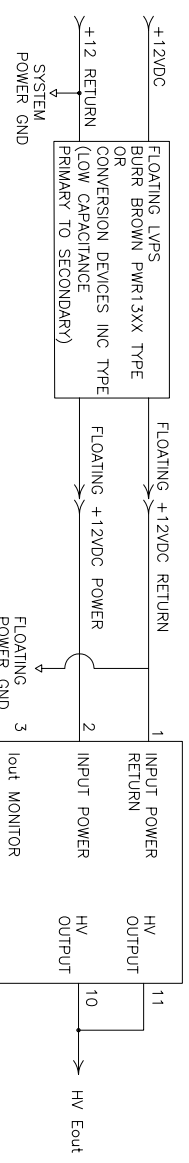
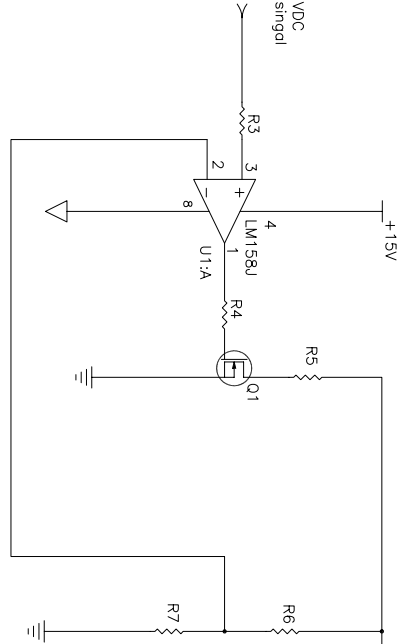


UltraVolt
Regulated High Voltage
Power Supply
MODEL 6A ILLUSTRATED

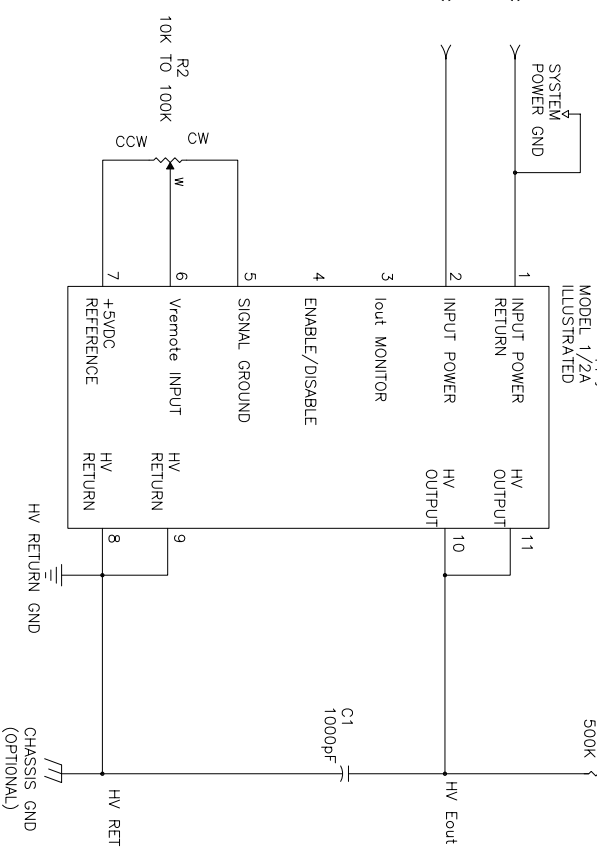


0 TO +400 lo 0 Bias Reference

0 TO +10 TO 0 VDC
parabola control signal



Divider Ratio to Match
Amplitude of
parabola control signal &
gain required



NOTE: ADJUST R8 AND GROUNDED UV HPS POWER LEVEL TO
RAISE FREQUENCY FOR HIGHER FREQUENCY USE HV AMPLIFIER
SUCH AS AN APEX HV OP-AMP

NOTES: REFER TO UV APPLICATION NOTES FOR MORE DETAILED INFORMATION
UV HPS POWER INPUT SHOULD NOT EXCEED +32VDC.
A 0.1uF TO 1.0 uF CAPACITOR CAN BE ADDED FROM REMOTE ADJUST
TO SIGNAL GROUND IN HIGH NOISE ENVIRONMENTS.

UltraVolt, Inc.
1800 Ocean Ave. Frnt
Ronkonkoma, NY 11779
1-631-471-4444

Title		DC DYNAMIC FOCUS AMPLIFIER	
Size	Number	UV- HVPS-CONN-9	Rev.
A			E1
Date	8/22/00	Drawn By	M.Z.
Filename uv-HVPS-CONN-9_rvt1.dwg		Sheet	1 Of 2