

PROPRIETARY STATEMENT: ULTRAVOLT INC.  
CONFIDENTIAL DRAWING

2

B PART NUMBER:

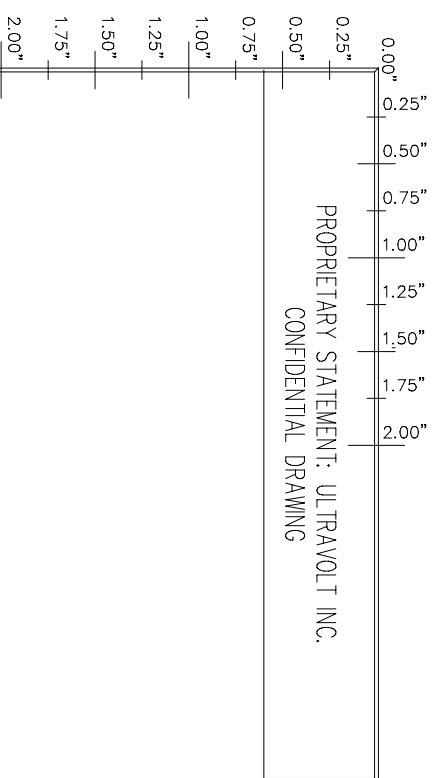
01-038

REV A

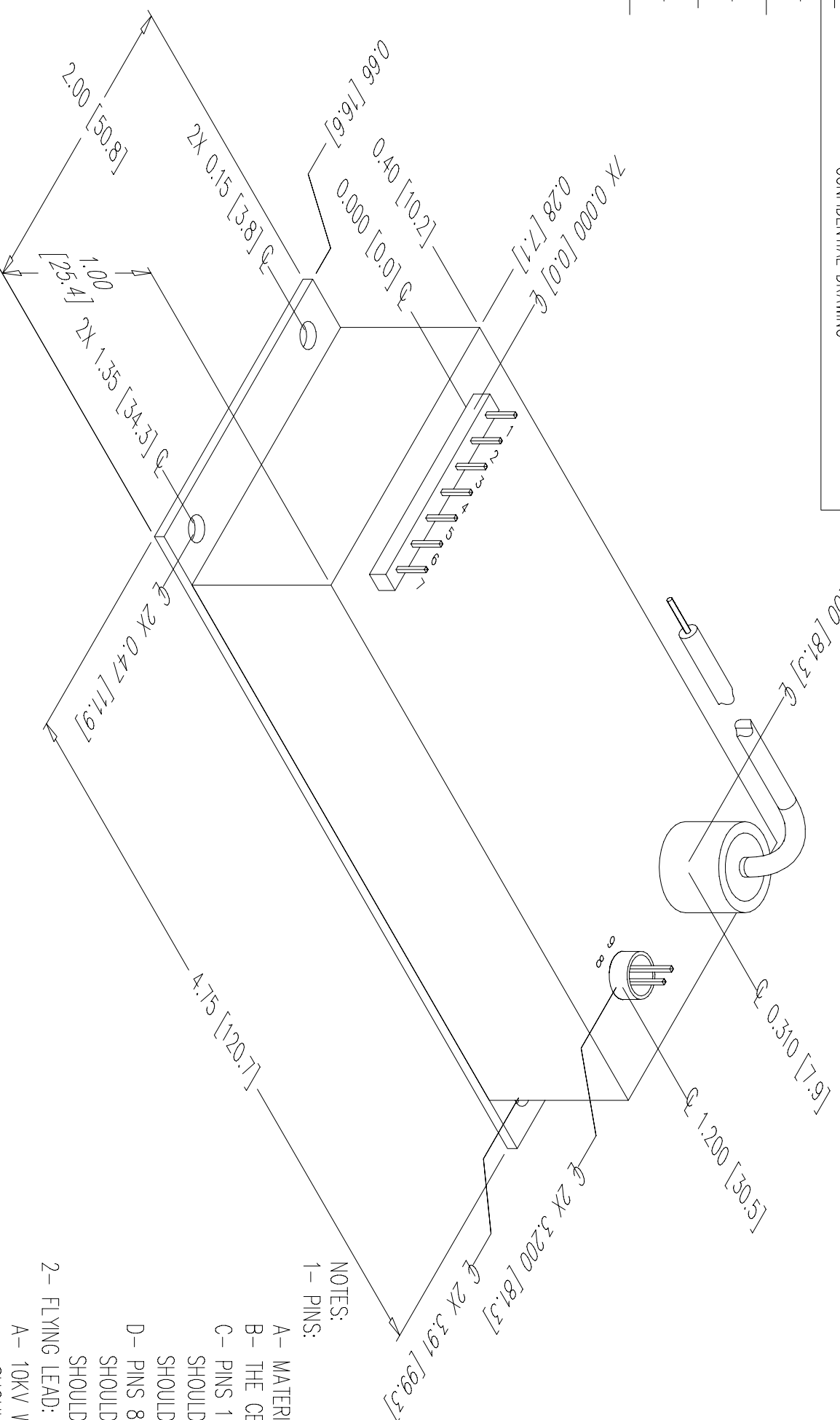
SH 1

REVISIONS

LTR	DESCRIPTION	BY	DATE	APPD
A	NEW RELEASE	SRO	9/29/04	J.M.



B



NOTES:  
1 - PINS:

- A- MATERIAL: GOLD PLATED 0.025 [0.64] SQ.
- B- THE CENTER OF THE PINS AND MOUNTING HOLES ARE LOCATED FROM THE CENTER OF PIN 1.
- C- PINS 1 THRU 7 SPACING 0.200 [5.08] ON CENTER, HEIGHT FROM COVER 0.280 [7.11] MIN. SHOULDER MATERIAL: DIALYL PHTHALATE 94V0, SHOULDER SIZE: 0.125 [3.17] X 1.400 [35.56] X 0.110 [2.79] HEIGHT FROM COVER.
- D- PINS 8, 9 SPACING 0.100 [2.54] ON CENTER, HEIGHT FROM COVER 0.280 [7.11] MIN. SHOULDER MATERIAL: TEFLON, SHOULDER SIZE: OD 0.27 [6.86] X ID 0.23 [5.71] X 0.220 [5.60] HEIGHT FROM COVER.
- 2- FLYING LEAD:  
A- 10KV WHITE Ø0.187 [Ø4.8] MAX. APPROX. 18.00 [457.2] LONG. SHOULDER MATERIAL: FR4, FILLED WITH EPOXY. SHOULDER SIZE: OD 0.50 [12.70] X ID 0.38 [9.52] X 0.40 [10.16] HEIGHT FROM COVER.
- 3- MOUNTING:  
A- FOUR HOLES Ø0.156 [Ø3.96] THROUGH A 0.062 [1.57] THK PLATE.
- 4- CONSTRUCTION:  
EPOXY FILLED ALUMINUM BOX CHEM FILM PER MIL-C-5541 CLASS 1A.
- 5- TOLERANCE:  
A- OVERALL +/-0.050 [1.27]  
B- PIN TO PIN +/-0.015 [0.38]

A

A



UNLESS OTHERWISE SPECIFIED DIMENSION ARE IN INCHES TOLERANCES ARE:		CUSTOMER		DATE	
2 PL DEC ± .02	FRACT ± 1/64	DRAWN	S. Orban	9/29/04	
3 PL DEC ± .010	ANGLES ± 2°	CHKD	G. McLaren	10/12/04	
HOLE DIA	TOLERANCES	MFG	N/A		
.0135 THRU .125	+ .004	MFG ENGR	D. Burkard	10/13/04	
.126 THRU .250	- .004	PROCESS	N/A		
.251 THRU .500	+ .006	QA	Tomy Chliek	10/13/04	
.501 THRU .750	+ .008	CHIEF ENG	J. Morrison	10/20/04	
.751 THRU 1.000	- .010	CR: 01-038, rev.A, A-C-233, CAN.dwg			
1.001 THRU 2.000	+ .012				

**ULTRAVOLT INC.**  
1800 OCEAN AVE. FRNT, RONKONKOMA, N.Y. 11779  
1-831-471-4444  
OUTLINE A & C  
Z33 OPTION SERIES  
METAL CASE

DASH NUMBER	NEXT ASSY	USED ON
APPLICATION		

2

1

1