

PROPRIETARY STATEMENT: ULTRAVOLT INC.  
CONFIDENTIAL DRAWING

2

REVOLUTIONS

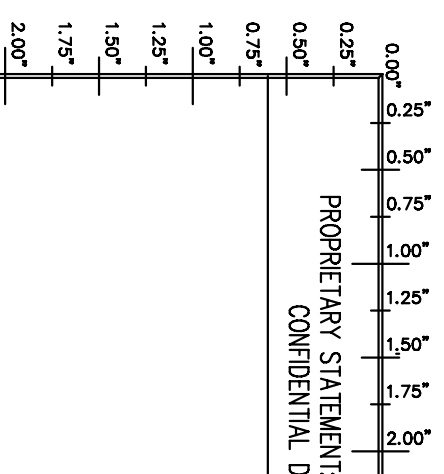
LTR	DESCRIPTION	BY	DATE	APPD
A	NEW RELEASE	D.S.	2/4/99	J.M.
B	ADDED METRIC DIM AS PER ECO #1935	J.T.	2/17/00	J.M.
C	REVISED PER ECO #2743	SRO	3/1/02	D.P.
D	REVISED PER ECO #UV3136	SG	11/26/03	SRO
E	REVISED PER ECO #UV3377	SRO	6/23/05	CP

B PART NUMBER:

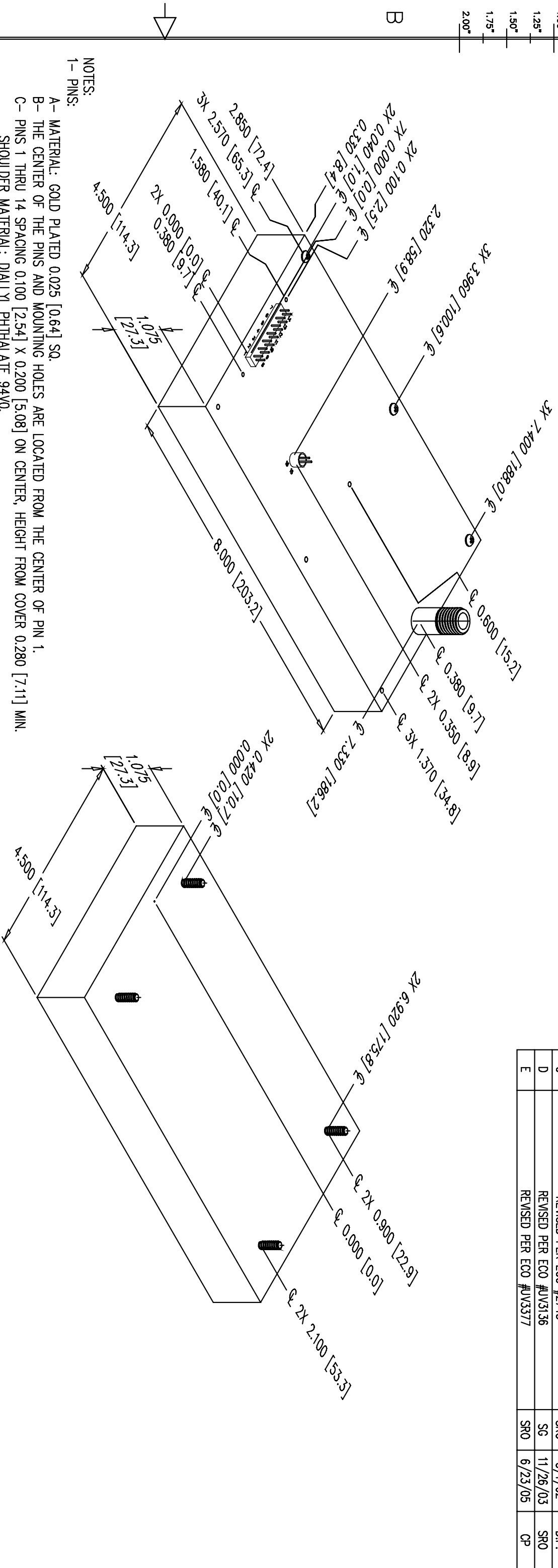
01-031

REV E

SH 1



B



A

NOTES:  
1- PINS:

- A- MATERIAL: GOLD PLATED 0.025 [0.64] SQ.
- B- THE CENTER OF THE PINS AND MOUNTING HOLES ARE LOCATED FROM THE CENTER OF PIN 1.
- C- PINS 1 THRU 14 SPACING 0.100 [2.54] X 0.200 [5.08] ON CENTER, HEIGHT FROM COVER 0.280 [7.11] MIN. SHOULDER MATERIAL: DIALYL PHTHALATE 94V0, SHOULDER SIZE: 0.250 [6.35] X 1.400 [35.56] X 0.100 [2.54] HEIGHT FROM COVER. MOUNTING HOLES FOR RETENTION BRACKET #2-56 X 0.125 [3.8] DEEP.
- D- PINS 15 & 16 SPACING 0.100 [2.54] ON CENTER, HEIGHT FROM COVER 0.450 [11.43] MIN. SHOULDER MATERIAL: TEFLON, SHOULDER SIZE: OD 0.260 [6.60] X ID 0.230 [5.84] X 0.220 [5.60] HEIGHT FROM COVER.
- E- H.V. CONNECTOR LGH SERIES, HEIGHT FROM COVER 0.600 [15.24] MIN. MATERIAL: DIALYL PHTHALATE 94V0.

- 2- MOUNTING:
  - A- BOTTOM MTG. #8-32X0.440 LONG THREADED STUD
  - B- Z11 OPTION, REMOVE AND DISCARD THREE SCREWS, ADD #4-40 THREADED INSERT AT 7 LOCATIONS.
- 3- CONSTRUCTION:
  - EPOXY FILLED ALUMINUM BOX CHEM FILM
  - PER MIL-C-5541 CLASS 1A
- 4- TOLERANCE:
  - A- OVERALL +/-0.025 [0.64]
  - B- PIN TO PIN +/-0.015 [0.38]
  - C- MOUNTING HOLE LOCATION +/- 0.025 [0.64]

CUSTOMER	UNLESS OTHERWISE SPECIFIED DIMENSIONS ARE IN INCHES TOLERANCES ARE:	FRAC T	DEC	ANGLES ± 2°
DRAWN	S. Orbom		02	1/64
CHKD	D. Po...		010	
MFG	N/A			
MFG ENGR	N/A			
PROCESS	N/A			
QA	N/A			
CHIEF ENGR	N/A			
DATE	02/04/02			
<b>ULTRAVOLT INC.</b>				
1800 OCEAN AVE. FRNT. RONKONKOMA, N.Y. 11779				
(60W & 125W) 8KV - 15KV				
SCALE NONE DO NOT SCALE THIS DRAWING SHEET 1 OF 1				

2

1

B

A