

PROPRIETARY STATEMENT: ULTRAVOLT INC.  
CONFIDENTIAL DRAWING

2

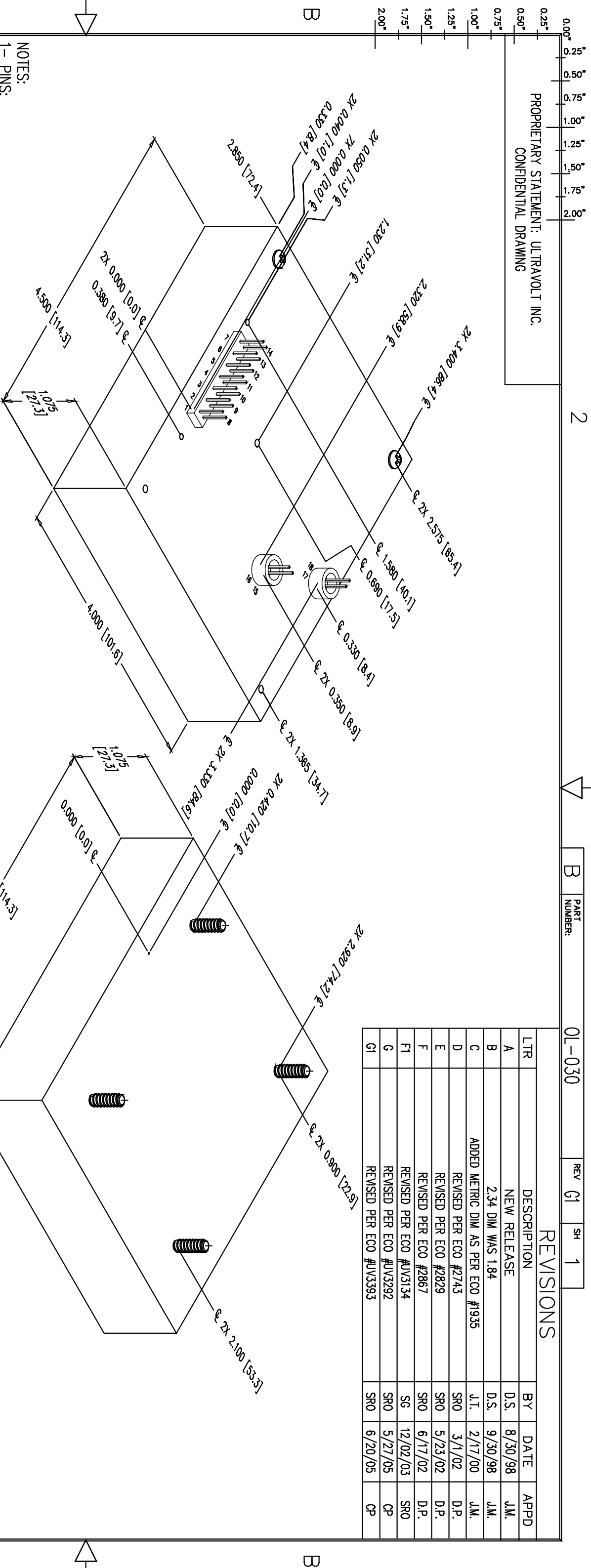
B PART NUMBER:

01-030

REV G1 SH 1

REVISIONS

LTR	DESCRIPTION	BY	DATE	APPD
A	NEW RELEASE	D.S.	8/30/98	J.M.
B	2.34 DIM WAS 1.84	D.S.	9/30/98	J.M.
C	ADDED METRIC DIM AS PER ECO #1935	J.T.	2/17/00	J.M.
D	REVISED PER ECO #2743	SRO	3/1/02	D.P.
E	REVISED PER ECO #2829	SRO	5/23/02	D.P.
F	REVISED PER ECO #2867	SRO	6/17/02	D.P.
F1	REVISED PER ECO #UV3134	SG	12/02/03	SRO
G	REVISED PER ECO #UV3292	SRO	5/27/05	CP
G1	REVISED PER ECO #UV3393	SRO	6/20/05	CP



- NOTES:
- 1- PINS:
  - A- MATERIAL: GOLD PLATED 0.025 [0.64] SQ.
  - B- THE CENTER OF THE PINS & MOUNTING HOLES ARE LOCATED FROM THE CENTER OF PIN 1.
  - C- PINS 1 THRU 14 SPACING 0.200 [5.08] X 0.100 [2.54] ON CENTER, HEIGHT FROM COVER 0.280 [7.11] MIN. SHOULDER MATERIAL: DIALYL PHTHALATE 94V0. SHOULDER SIZE: 0.250 [6.35] X 1.400 [35.56] X 0.035 [0.89] HEIGHT FROM COVER. MTG HOLES FOR RETENTION BRACKET #2-56 X 0.125 [3.18] DP.
  - D- PINS 15, 16, 17, 18 SPACING .100 [2.54] ON CENTER. HEIGHT FROM COVER 0.280 [7.11] MIN. SHOULDER MATERIAL: DIALYL PHTHALATE 94V0. SHOULDER SIZE: OD 0.380 [9.65] X ID 0.250 [6.35] X 0.200 [5.0] HEIGHT FROM COVER.

- 2- MOUNTING:
- A- BOTTOM MTG, #8-32 X 0.440 LONG THREADED STUD.
- B- OPTION Z11- TOP MTG, REMOVE & DISCARD TWO SCREWS, ADD 5X #4-40 THREAD MALE/FEMALE STANDOFF.

- 3- CONSTRUCTION:
- EPOXY FILLED ALUMINUM BOX CHEM FILM, PER MIL-C-5541 CLASS 1A.
- 4- TOLERANCE:
- A- OVERALL +/-0.025 [0.64]
- B- PIN TO PIN +/-0.015 [0.38]
- C- MOUNTING HOLE LOCATION +/- 0.025 [0.64]

UNLESS OTHERWISE SPECIFIED DIMENSION ARE IN INCHES		TOLERANCES ARE:		CUSTOMER		DATE	
2 PL DEC ± .02 FRACT ± 1/64		3 PL DEC ± .010 ANGLES ± 2°		DRWN	S. Orthorn	CHKD	D. Poutouret
HOLE DIA		TOLERANCES		MFG	N/A	DATE	3/20/02
.0135 THRU .125		+.004		MFG ENGR	N/A	PROCESS	N/A
.126 THRU .250		+.005		QA	N/A	CHIEF ENG	N/A
.251 THRU .500		+.008		CR: OL-030	rev: G1	1-8KV-8KV.dwg	
.501 THRU .750		+.009		SCALE	NONE	DO NOT SCALE THIS DRAWING	SHEET 1 OF 1
.751 THRU 1.000		+.010					
1.001 THRU 2.000		+.012					

2

1

A

ULTRAVOLT INC.  
1800 OCEAN AVE. FRNT, RONKONKOMA, N.Y. 11779  
1-831-471-4444

OUTLINE  
HIGH POWER 'C' SERIES  
(60W & 125W) 1/8KV - 6KV

PART NUMBER:  
01-030

