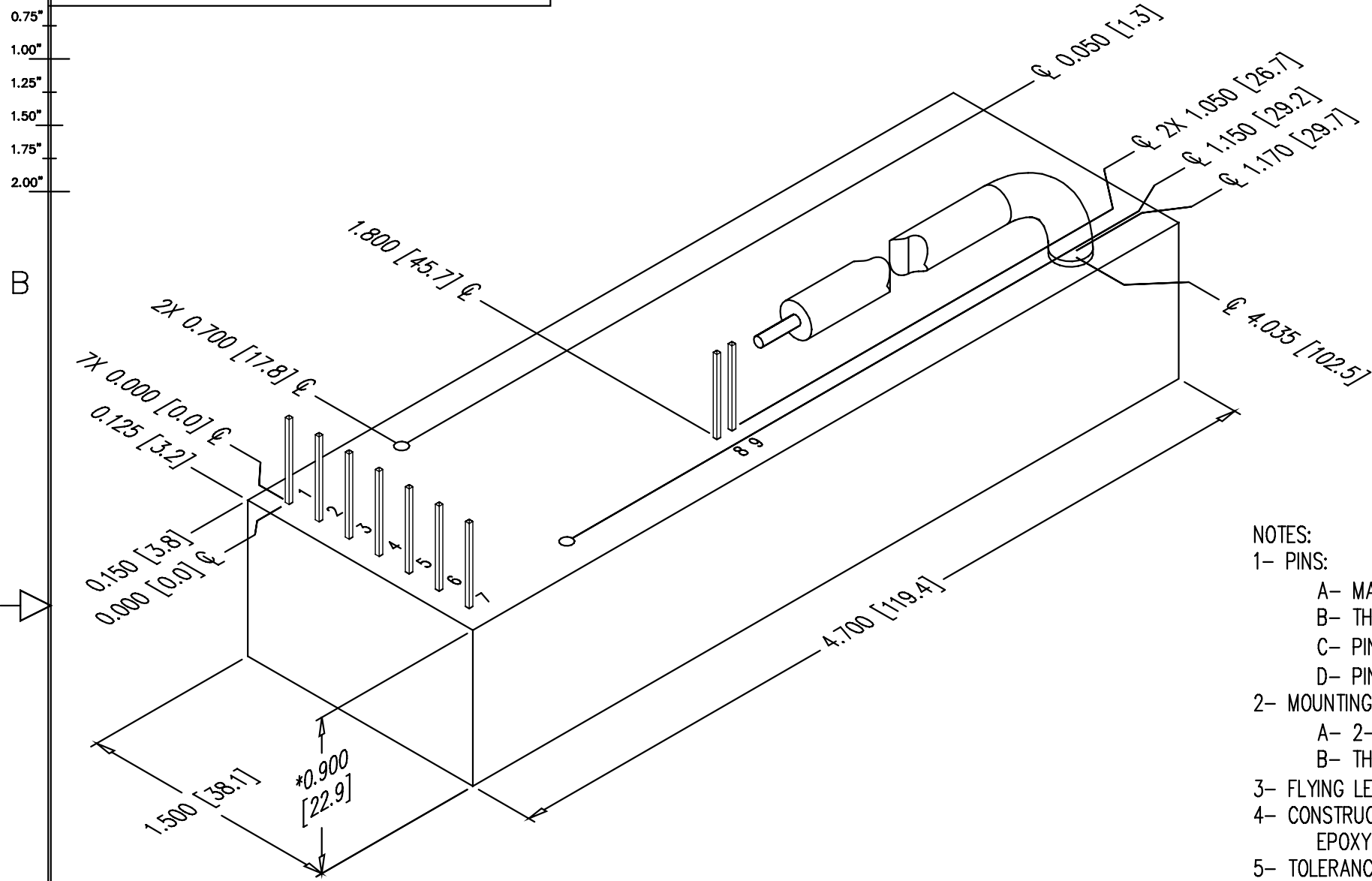


0.00" 0.25" 0.50" 0.75" 1.00" 1.25" 1.50" 1.75" 2.00"

PROPRIETARY STATEMENT: ULTRAVOLT INC.  
CONFIDENTIAL DRAWING

B PART NUMBER: OL-015 REV H SH 1

REVISIONS				
LTR	DESCRIPTION	BY	DATE	APPD
A	NEW RELEASE	D.S.	12/15/99	J.M.
B	.825 WAS .85, 4.14 WAS 4.1	D.S.	12/22/97	J.M.
C	ADDED TITLE TO PICTURE	D.S.	4/5/99	J.M.
D	ADDED METRIC DIM AS PER ECO #1935	J.T.	2/17/00	J.M.
E	REVISED PER ECO #2137	D.S.	01/12/18	J.M.
F	REVISED PER ECO #2743	SRO	3/1/02	D.P.
G	REVISED PER ECO #JV3135	SG	12/04/03	SRO
H	REVISED PER ECO #JV3245	RG	10/11/05	S.O.



- NOTES:
- 1- PINS:
    - A- MATERIAL: GOLD PLATED 0.025 [0.64] SQ.
    - B- THE CENTER OF THE PINS AND MOUNTING HOLES ARE LOCATED FROM THE CENTER OF PIN 1.
    - C- PINS 1 THRU 7 SPACING 0.200 [5.08] ON CENTER, HEIGHT FROM COVER 0.470 [11.7] MIN
    - D- PINS 8, 9 SPACING 0.100 [2.54] ON CENTER, HEIGHT FROM COVER 0.470 [11.7] MIN
  - 2- MOUNTING:
    - A- 2-56 X 0.30 [7.62] DP UNC-2B THD 2 PLACES.
    - B- THREADED POST MAY NOT BE FLUSH TO COVER.
  - 3- FLYING LEAD  $\phi$ 0.187 [4.8] MAX. APPROX. 18.00 [457.2] LONG.
  - 4- CONSTRUCTION:
    - EPOXY FILLED DAP BOX CERTIFIED TO ASTM-D-5940
  - 5- TOLERANCE:
    - A- OVERALL +/-0.050 [1.27]
    - B- PIN TO PIN +/-0.015 [0.38]
    - C- MOUNTING HOLE LOCATION +/-0.025 [0.64]
  - \*6- 15 & 30 WATT VERSIONS ARE AN ADDITIONAL 0.062 [1.57] IN HEIGHT.
  - \*7- -M EQUIPPED UNITS ARE AN ADDITIONAL 0.030 [0.76] IN HEIGHT.

UNLESS OTHERWISE SPECIFIED DIMENSION ARE IN INCHES TOLERANCES ARE:			CUSTOMER		<b>ULTRAVOLT, INC.</b> 1800 OCEAN AVE. FRNT, RONKONKOMA, N.Y. 11779 1-831-471-4444
2 PL DEC ± .02	3 PL DEC ± .010	FRACT ± 1/64	ANGLES ± 2°	DRAWN <i>S. Orban</i> DATE 02/04/02 CHKD <i>D. Parant</i> 3/20/02 MFG <i>N/A</i> MFG ENGR <i>N/A</i> PROCESS <i>N/A</i> QA <i>N/A</i> CHIEF ENG <i>N/A</i> OFN: OL-015_revH_15A.dwg	
HOLE DIA	TOLERANCES				OUTLINE 15A SERIES PART NUMBER: OL-015 REV H
.0135 THRU .125	+ .004 - .004				
.126 THRU .250	+ .005 - .005				SCALE NONE DO NOT SCALE THIS DRAWING SHEET 1 OF 1
.251 THRU .500	+ .006 - .006				
.501 THRU .750	+ .008 - .008				
.751 THRU 1.000	+ .010 - .010				
1.001 THRU 2.000	+ .012 - .012				
DASH NUMBER	NEXT ASSY	USED ON			
APPLICATION					