

PROPRIETARY STATEMENT: ULTRAVOLT INC.
CONFIDENTIAL DRAWING

2

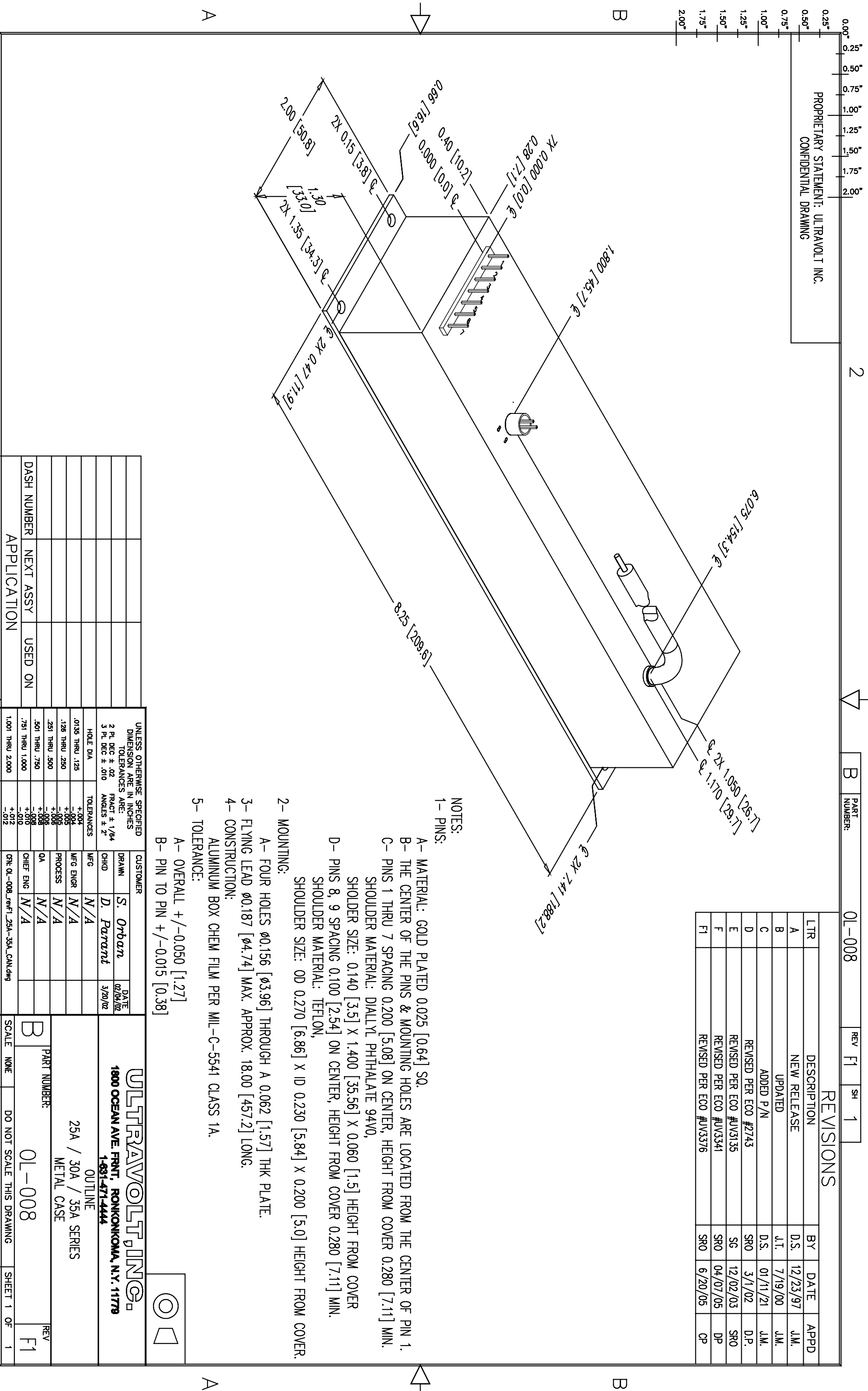
B PART NUMBER:

01-008

REV F1 SH 1

REVISIONS

LTR	DESCRIPTION	BY	DATE	APPD
A	NEW RELEASE	D.S.	12/23/97	J.M.
B	UPDATED	J.T.	7/19/00	J.M.
C	ADDED P/N	D.S.	01/11/21	J.M.
D	REVISED PER ECO #2743	SRO	3/1/02	D.P.
E	REVISED PER ECO #UV3135	SG	12/02/03	SRO
F	REVISED PER ECO #UV3341	SRO	04/07/05	DP
F1	REVISED PER ECO #UV3376	SRO	6/20/05	CP



NOTES:
1- PINS:

- A- MATERIAL: GOLD PLATED 0.025 [0.64] SQ.
 - B- THE CENTER OF THE PINS & MOUNTING HOLES ARE LOCATED FROM THE CENTER OF PIN 1.
 - C- PINS 1 THRU 7 SPACING 0.200 [5.08] ON CENTER, HEIGHT FROM COVER 0.280 [7.11] MIN. SHOULDER MATERIAL: DIALYL PHTHALATE 94V0, SHOULDER SIZE: 0.140 [3.5] X 1.400 [35.56] X 0.060 [1.5] HEIGHT FROM COVER
 - D- PINS 8, 9 SPACING 0.100 [2.54] ON CENTER, HEIGHT FROM COVER 0.280 [7.11] MIN. SHOULDER MATERIAL: TEFLON, SHOULDER SIZE: OD 0.270 [6.86] X ID 0.230 [5.84] X 0.200 [5.0] HEIGHT FROM COVER.
- 2- MOUNTING:
A- FOUR HOLES Ø0.156 [Ø3.96] THROUGH A 0.062 [1.57] THK PLATE.
3- FLYING LEAD Ø0.187 [Ø4.74] MAX. APPROX. 18.00 [457.2] LONG.
- 4- CONSTRUCTION:
ALUMINUM BOX CHEM FILM PER MIL-C-5541 CLASS 1A.
- 5- TOLERANCE:
A- OVERALL +/-0.050 [1.27]
B- PIN TO PIN +/-0.015 [0.38]

DASH NUMBER	NEXT ASSY	USED ON	APPLICATION

UNLESS OTHERWISE SPECIFIED DIMENSION ARE IN INCHES TOLERANCES ARE:		CUSTOMER	
2 PL DEC ± .02	FRACT ± 1/64	DRWN	S. Orban
3 PL DEC ± .010	ANGLES ± 2°	CHKD	D. Pa.rra.t
HOLE DIA		DATE	02/04/02
.0135 THRU .125	+ .004	MFG	N/A
.126 THRU .250	- .005	MFG ENGR	N/A
.251 THRU .500	+ .008	PROCESS	N/A
.501 THRU .750	+ .008	QA	N/A
.751 THRU 1.000	- .008	CHIEF ENGR	N/A
1.001 THRU 2.000	- .012	CR: 01-008.ref1_25A-35A.CAN.dwg	

ULTRAVOLT INC.
1800 OCEAN AVE. FRNT, RONKONKOMA, N.Y. 11779
1-831-471-4444

OUTLINE
25A / 30A / 35A SERIES
METAL CASE

PART NUMBER: 01-008

SCALE: NONE DO NOT SCALE THIS DRAWING

SHEET 1 OF 1



A

B

A

B

2

1