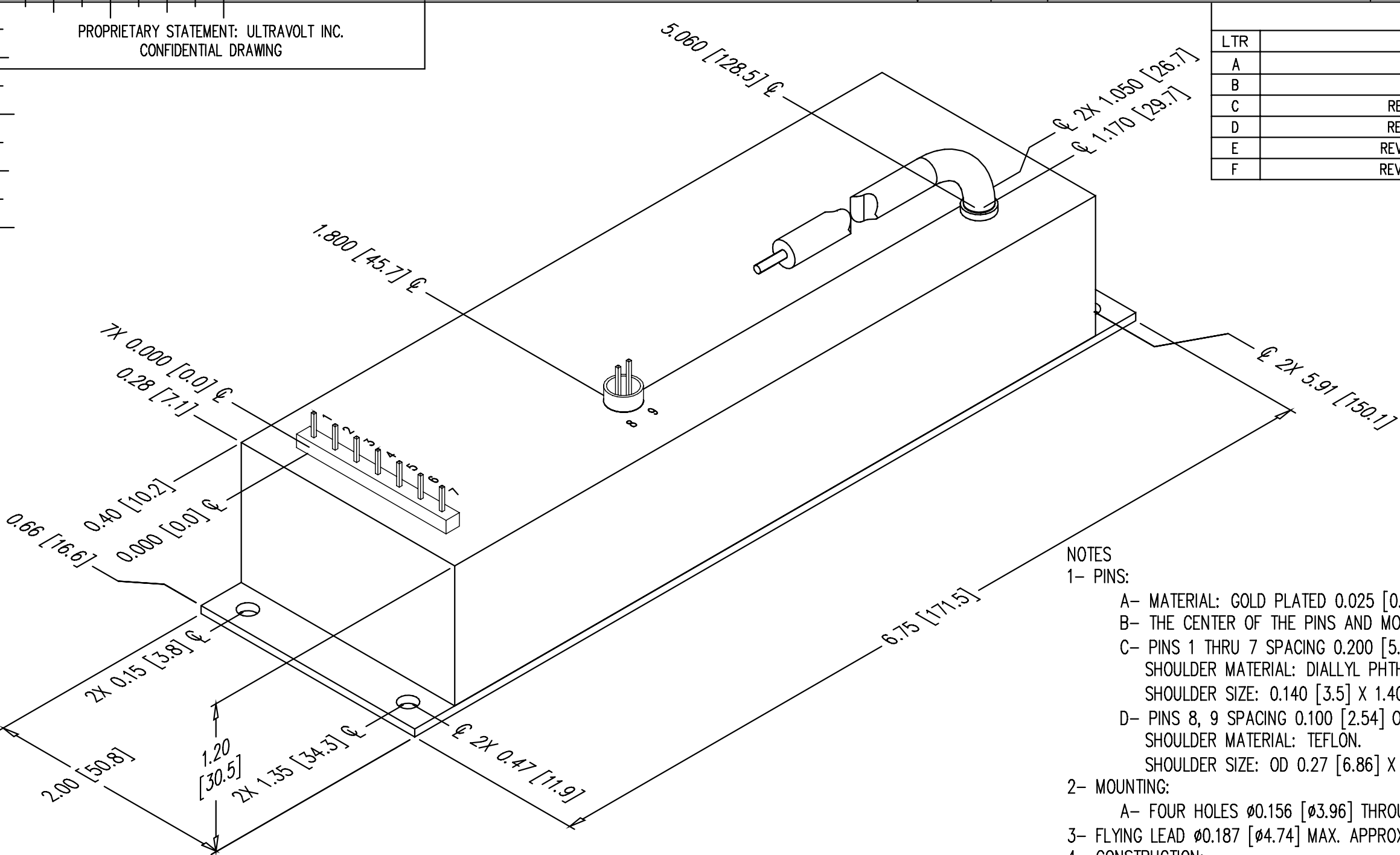


PROPRIETARY STATEMENT: ULTRAVOLT INC.
CONFIDENTIAL DRAWING

REVISIONS				
LTR	DESCRIPTION	BY	DATE	APPD
A	NEW RELEASE	D.S.	12/23/97	J.M.
B	UPDATED	J.T.	7/19/00	J.M.
C	REVISED PER ECO #2137	D.S.	01/11/20	J.M.
D	REVISED PER ECO #2743	SRO	3/1/02	D.P.
E	REVISED PER ECO #UV3135	SG	12/02/03	SRO
F	REVISED PER ECO #UV3247	RG	11/12/05	S.O.

B

A



NOTES

- 1- PINS:
 - A- MATERIAL: GOLD PLATED 0.025 [0.64] SQ.
 - B- THE CENTER OF THE PINS AND MOUNTING HOLES ARE LOCATED FROM THE CENTER OF PIN 1.
 - C- PINS 1 THRU 7 SPACING 0.200 [5.08] ON CENTER, HEIGHT FROM COVER 0.280 [7.11] MIN. SHOULDER MATERIAL: DIALLYL PHTHALATE. 94V0. SHOULDER SIZE: 0.140 [3.5] X 1.400 [35.56] X 0.060 [1.5] HEIGHT FROM COVER.
 - D- PINS 8, 9 SPACING 0.100 [2.54] ON CENTER, HEIGHT FROM COVER 0.350 [8.9] MIN. SHOULDER MATERIAL: TEFLON. SHOULDER SIZE: OD 0.27 [6.86] X ID 0.23 [5.71] X 0.200 [5.0] MIN HEIGHT FROM COVER.
- 2- MOUNTING:
 - A- FOUR HOLES $\phi 0.156$ [$\phi 3.96$] THROUGH A 0.062 [1.57] THK PLATE.
- 3- FLYING LEAD $\phi 0.187$ [$\phi 4.74$] MAX. APPROX. 18.00 [457.2] LONG.
- 4- CONSTRUCTION:
 - EPOXY FILLED ALUMINUM BOX CHEM FILM PER MIL-C-5541 CLASS 1A.
- 5- TOLERANCE:
 - A- OVERALL ± 0.050 [1.27]
 - B- PIN TO PIN ± 0.015 [0.38]



UNLESS OTHERWISE SPECIFIED DIMENSION ARE IN INCHES TOLERANCES ARE:			CUSTOMER		
			DRAWN	S. Orban	DATE
			CHKD	D. Parant	02/04/02
			MFG	N/A	
			MFG ENGR	N/A	
			PROCESS	N/A	
			QA	N/A	
			CHIEF ENG	N/A	
			CFN:	OL-007_revF_20A_CAN.dwg	
HOLE DIA	TOLERANCES				
.0135 THRU .125	+ .004 - .004				
.126 THRU .250	+ .005 - .005				
.251 THRU .500	+ .006 - .006				
.501 THRU .750	+ .008 - .008				
.751 THRU 1.000	+ .010 - .010				
1.001 THRU 2.000	+ .012 - .012				
DASH NUMBER	NEXT ASSY	USED ON			
APPLICATION					

ULTRAVOLT, INC.
1800 OCEAN AVE. FRNT, RONKONKOMA, N.Y. 11779
1-631-471-4444

OUTLINE 20A SERIES METAL CASE		
PART NUMBER:	OL-007	REV F
SCALE	NONE	DO NOT SCALE THIS DRAWING
SHEET 1 OF		1

2

1