

PROPRIETARY STATEMENT: ULTRAVOLT INC.
CONFIDENTIAL DRAWING

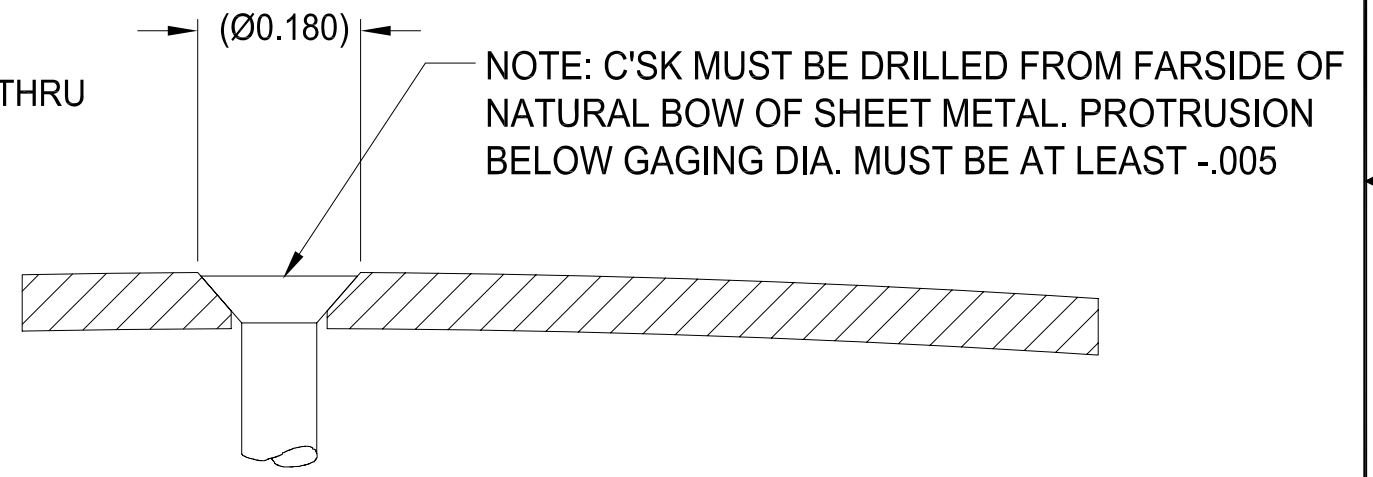
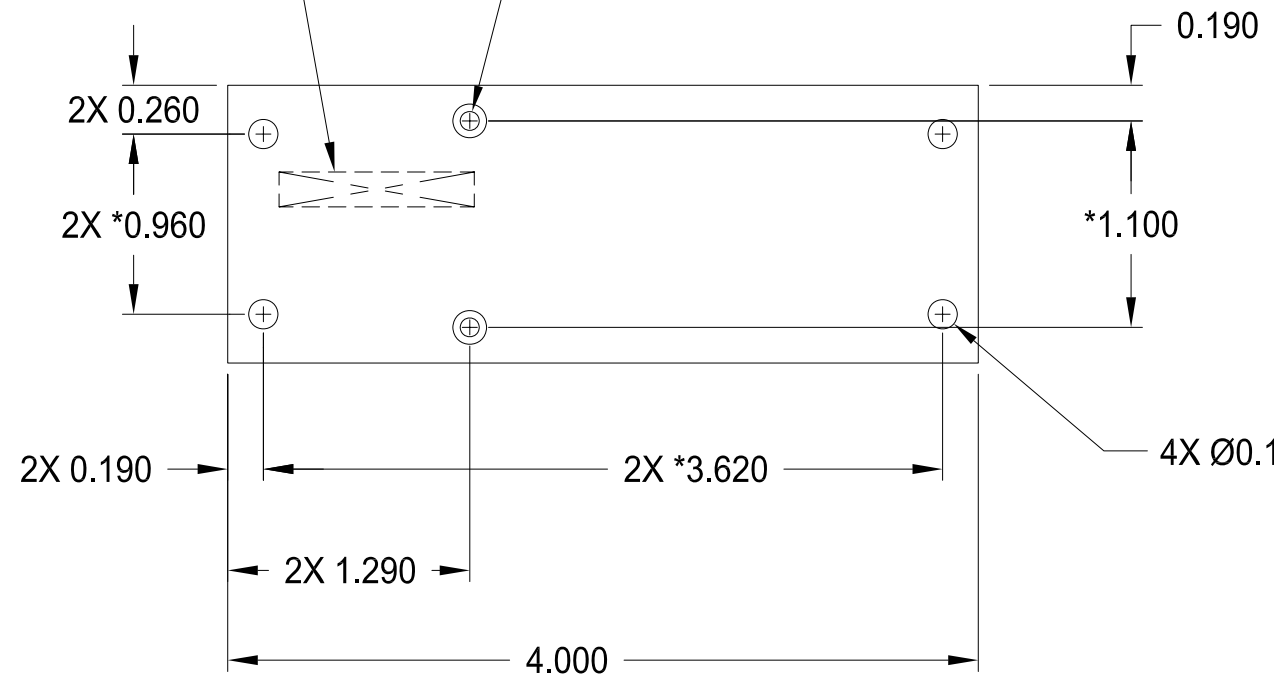
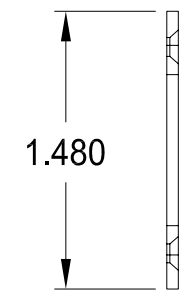
B PART NUMBER: HS-109 REV A SH 1

REVISIONS

LTR	DESCRIPTION	BY	DATE	APPD
1	PROTOTYPE	SRO	7/3/02	DP
2	ADDED DETAIL "A" REVISED PER ECO # UV3094	SRO	8/14/03	D.P.
A	REVISED PER EC-00510-UV	JC	11/15/07	SRO

SEE NOTE 3
FAR SIDE

2X Ø0.101 ∇ THRU \sphericalangle Ø0.180 $^{+0.005}_{-0.000}$ X 82°
HOLE & C'SK TO BE CLEAR OF ANODIZE
SEE DETAIL "A"



DETAIL 'A'

- NOTES:
- 1- MATERIAL: 0.062 THK ALUM ALLOY 5052-H32 PER QQ-A-250/8.
 - 2- FINISH: BLACK ANODIZE PER MIL-A-8625, TYPE II, CLASS 2.
 - 3- MARK PART NUMBER AND REVISION. STAMP OR USE A NON-CONDUCTIVE INDELIBLE INK, (FREE OF CARBON) CONTRASTING COLOR, OR STAMP 0.09 - 0.125 HIGH CHARACTERS LOCATE APPROXIMATELY AS SHOWN, FAR SIDE. ie. XX-XXX_revX
 - 4- REMOVE ALL BURRS AND SHARP EDGES.
 - 5- DIMENSIONS WITH ASTERISK (*) TOLERANCE ARE ± 0.005 .

UNLESS OTHERWISE SPECIFIED DIMENSION ARE IN INCHES TOLERANCES ARE:		CUSTOMER	
2 PL DEC $\pm .02$	FRACT $\pm 1/64$	DRAWN	SRO
3 PL DEC $\pm .010$	ANGLES $\pm 2^\circ$	DATE	7/3/02
HOLE DIA	TOLERANCES	CHKD	D.S.
.0135 THRU .125	$^{+.004}_{-.004}$	8/26/02	
.126 THRU .250	$^{+.005}_{-.005}$	MFG	N/A
.251 THRU .500	$^{+.006}_{-.006}$	MFG ENGR	D. PARANT
.501 THRU .750	$^{+.008}_{-.008}$	PROCESS	N/A
.751 THRU 1.000	$^{+.010}_{-.010}$	QA	TONY CHLIEK
1.001 THRU 2.000	$^{+.012}_{-.012}$	CHIEF ENG	J.M.
		CFN:	HS-109_revA.dwg

ULTRAVOLT, INC.
1800 OCEAN AVE. FRNT, RONKONKOMA, N.Y. 11779
1-631-471-4444

HEAT SINK PLATE
"AA" SERIES - "E" OPTION

B PART NUMBER: HS-109 REV A

SCALE NONE DO NOT SCALE THIS DRAWING SHEET 1 OF 1

DASH NUMBER	NEXT ASSY	USED ON
APPLICATION		